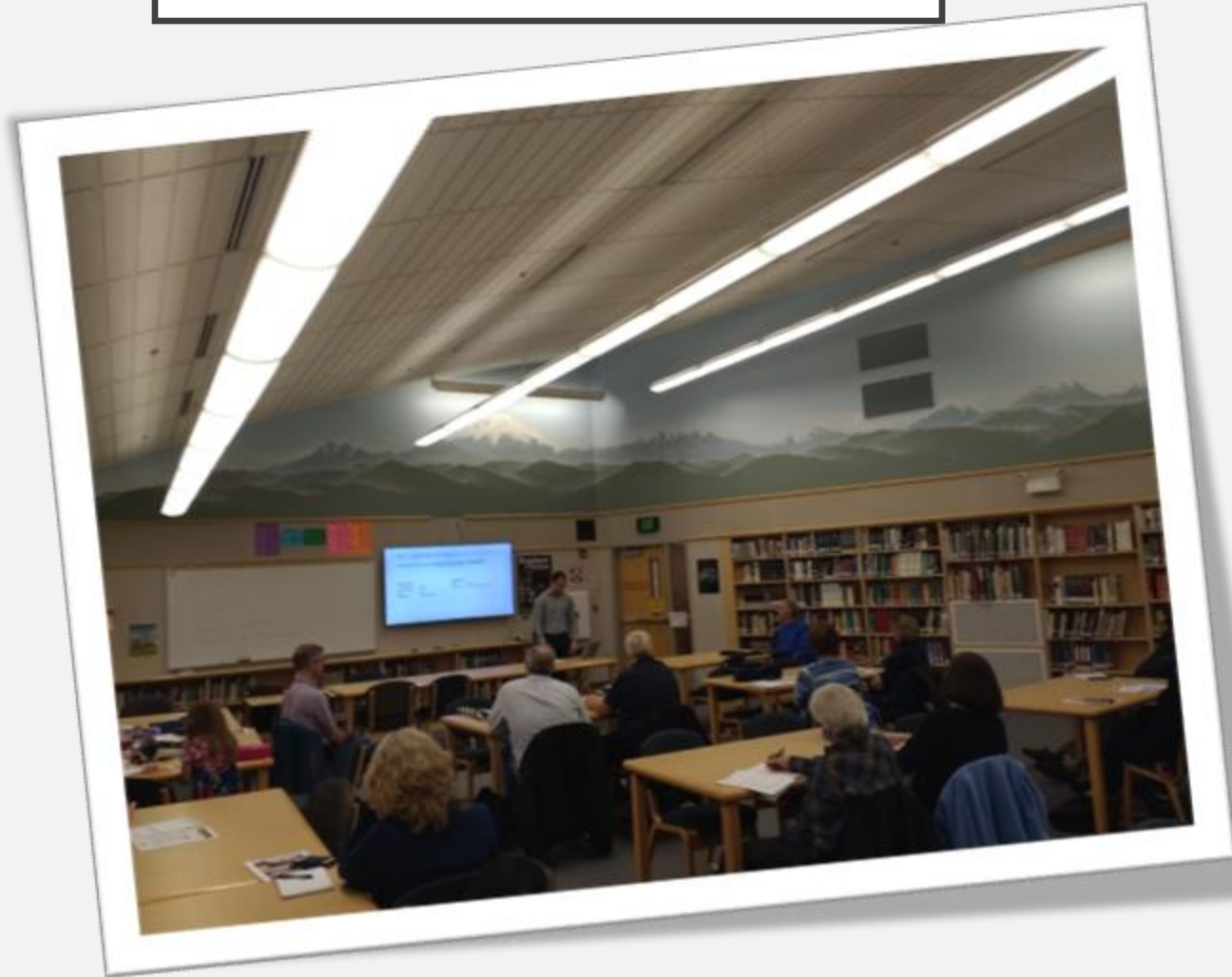


**SHERWOOD FOREST
COMMUNITY CLUB
ANNUAL MEETING 2023**

10-26-2023

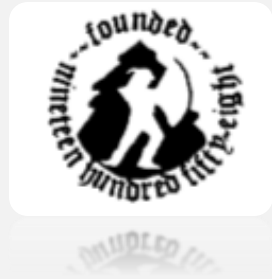
At Interlake High School (library) and MSFT Teams

AGENDA

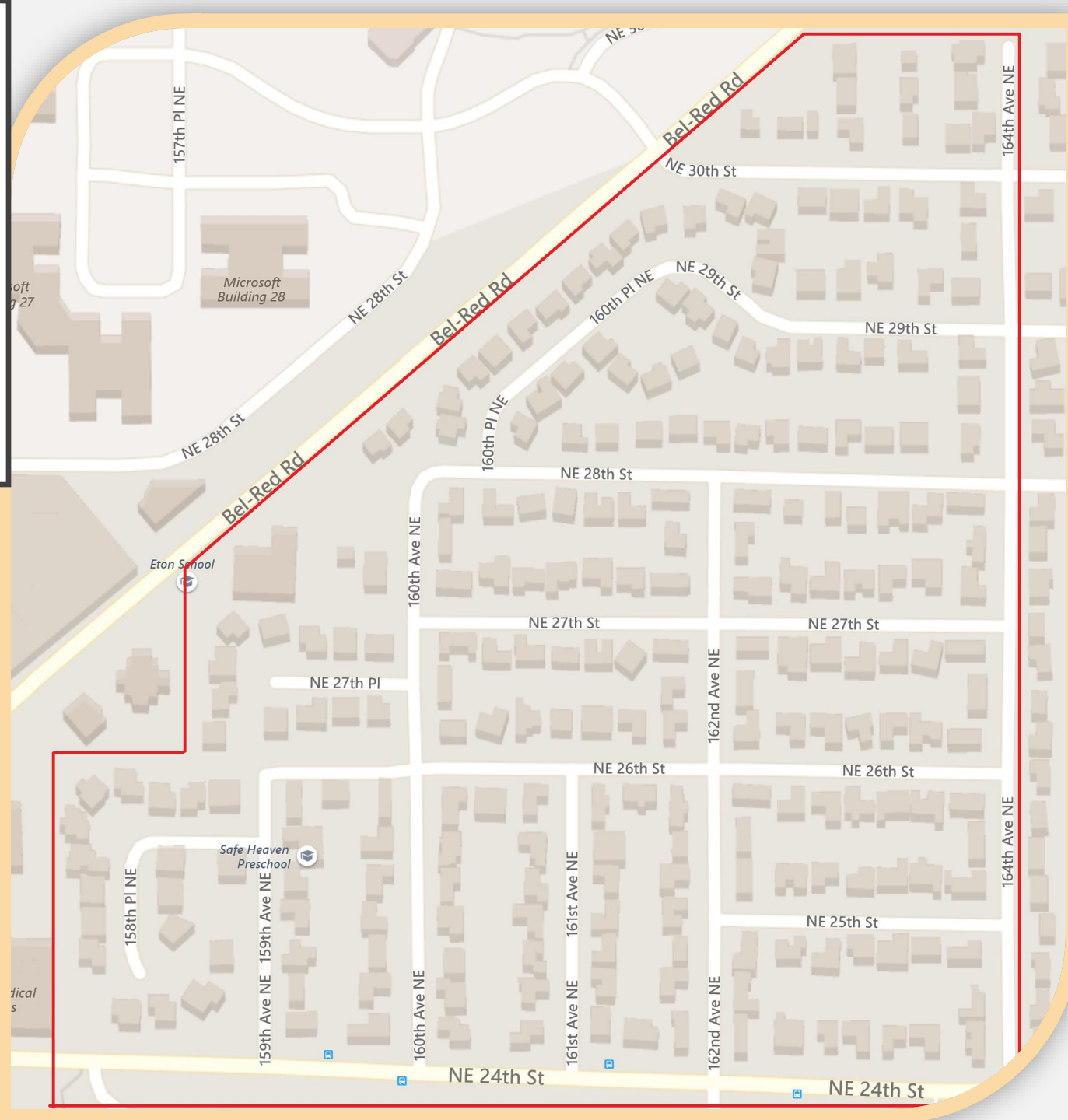


- **7:00PM: Start**
 - Overview of Sherwood Forest
 - Overview of Sherwood Forest Community Club (SFCC)
 - Key committee reports
 - Treasurer
 - Land Use
 - Emergency Preparedness
 - Community Connections
 - City of Bellevue programs
 - Board Election
 - Discussion/Comments/Q&A
- **8:30PM: End**

SHERWOOD FOREST: OUR COMMUNITY



- Founded in 1958
- 246 houses
- 18 blocks



CURRENT SFCC
BOARD

President – Lee
Sargent

Vice President –
Nate Kessler

Secretary – Anne
Drebin

Treasurer – John
Haro

Trustees

Honorary
Kurt Howeler

Janet Castaneda

Emmanuel Solis

Patrick Tousignant

SFCC ORGANIZATION ROLES

- Board
 - Representative body for Sherwood Forest
 - Meets monthly (*on the 3rd Thursday normally*)
 - (Try to) Follows Robert's Rules For Small Non-Profits
 - Make all meeting notes available to members (online)
- Committees
 - Lead by Committee Chair
 - Specific focus area (e.g. Garden Club, Emergency Preparedness, Traffic, etc.)
 - Provides update at Board monthly meeting
- Block Representatives (aka Block Captains)
 - Liaison between block residents and Board
 - Delivers newsletters and other SFCC material to residents on the block
 - [ONGOING] Engage the Block Reps in the monthly board meetings so they share insights on their blocks and learn what is going on in the SFCC area.

SFCC COMMITTEES

Communication Committee

- Develop and maintain an electronic communication system. Help with publication of Quarterly SFCC newsletters and any other community material.
- Block Representatives will distribute printed material such as SFCC newsletters etc to residents.

Emergency Preparedness Committee

- Develop and implement a block-by-block preparedness program to address impacts from severe storms, earthquakes, and other disasters.
- Involve Block Representatives to educate residents on the program.

Land Use Committee

- Monitor Bellevue and Redmond land use development proposals affecting the Sherwood Forest neighborhood. Have contact with City of Bellevue officials on Land Use. Be involved with City of Bellevue Land Use events, send summary of event back to SFCC Board.

Neighborhood Enhancement Committee

- Monitor the Bellevue Neighborhood Enhancement program, including announcements and proposals for northeast Bellevue from City of Bellevue. Solicit feedback from residents, via Block Representatives, and other means such as social media, email etc., on enhancements to the neighborhood.

Traffic & Transportation Committee

- Monitor and report to the SFCC Board of Directors regarding traffic flow patterns and speeds throughout the SFCC neighborhood. Monitor Bellevue and Redmond transportation plans, proposals, and projects with the potential to impact the Sherwood Forest Neighborhood

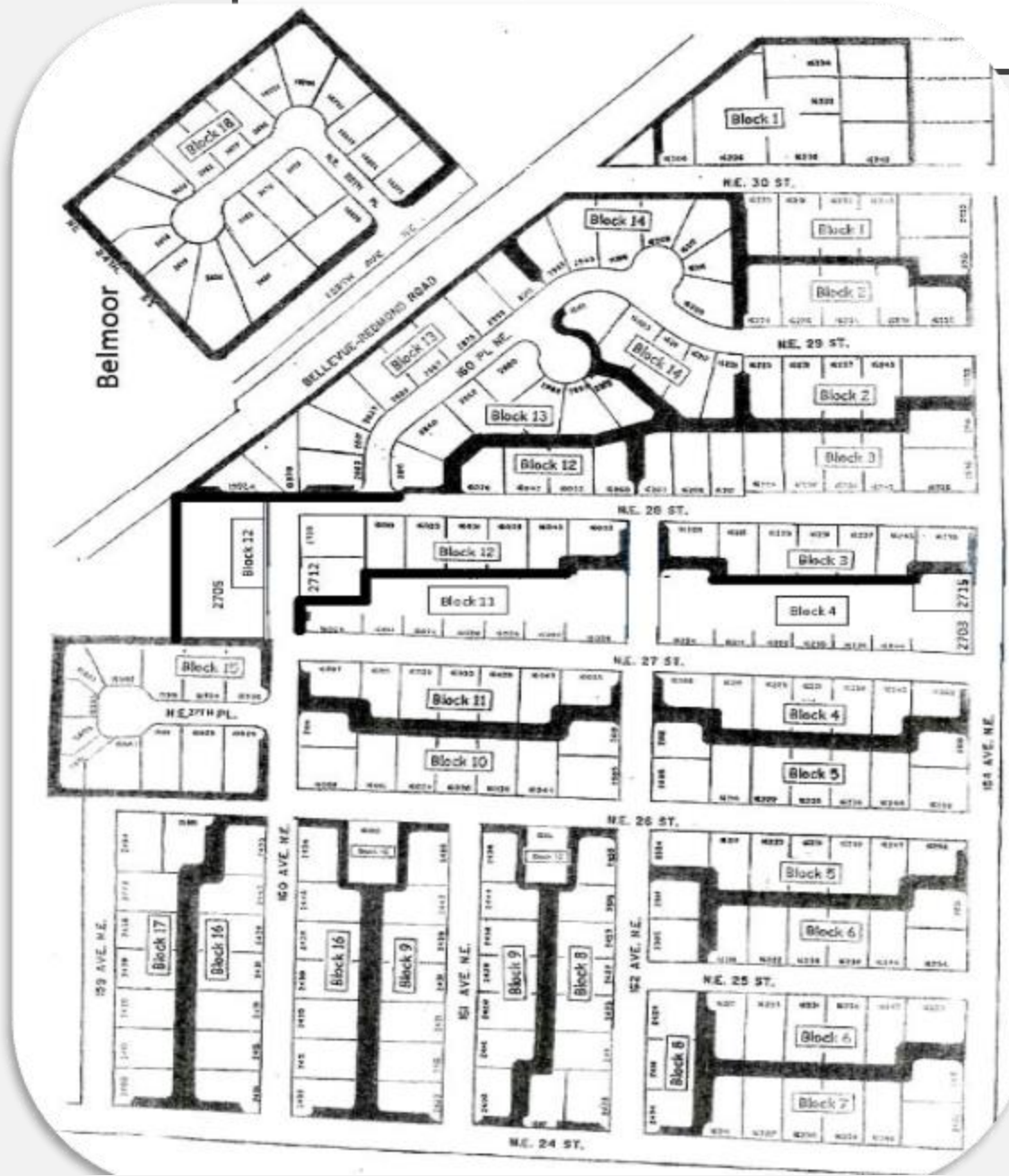
Community Connection Committee

- Connecting the many neighbors with fun, engaging, relevant events that will promote community building and opportunities to work together. Block Party and Garden Club are part of this committee

Block Watch Committee

- Develop and implement, block-by-block, the City of Bellevue Block Watch program to promote residential awareness, safety, and security.
- Involve Block Representatives and other residents in this effort of community safety.

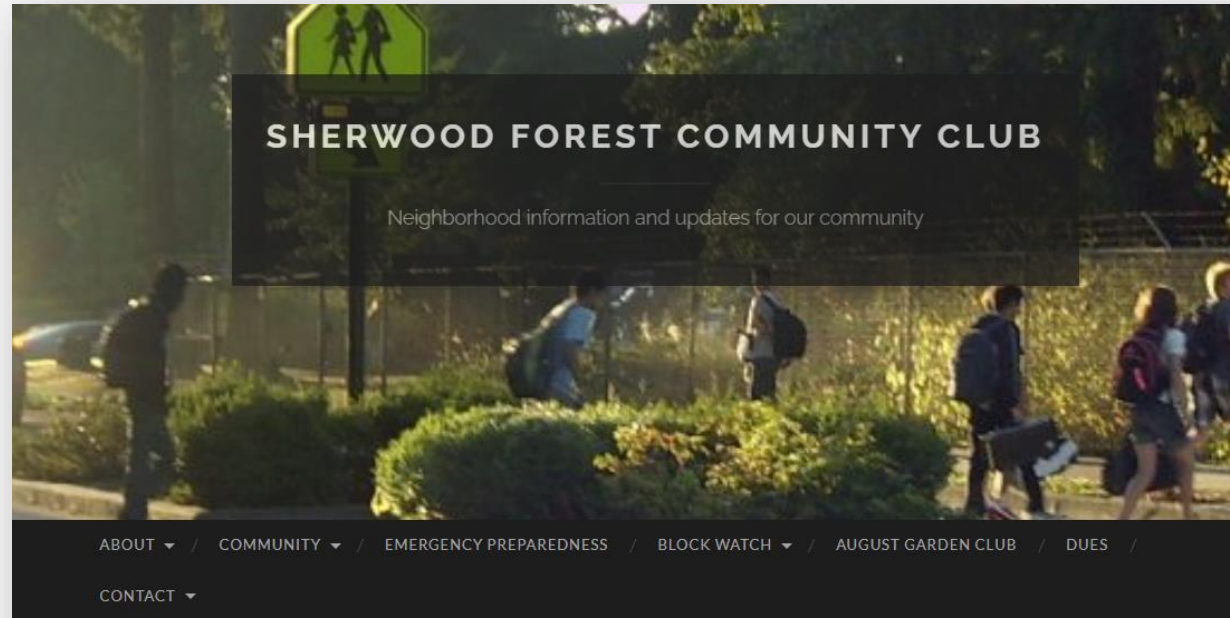
SHERWOOD FOREST COMMUNITY BLOCKS



Block#	Description	Resident
1	NE 30th to 164th	Kurt Howeler
2	NE 29th St (east end)	Sam Osheroff
3	NE 28th St (east end)	Ken Stoner
4	NE 27th St (east end)	Charlie Margolis
5	NE 26th St (east end)	Diane Parry
6	NE 25th St	Samir Chudgar
7	NE 24th St (east end)	Lee Sargent
8	162nd Ave NE (south end)	Dan Crevensten
9	161st Ave NE	John Haro
10	NE 26th St (west end)	Grant Gilkinson
11	NE 27th St (west end)	Allison Goodman
12	NE 28th St (west end)	Nate Kessler
13	160th Pl NE (west Peachtree)	Hank Sung
14	NE 29th (west end)	Erika Enomoto
15	NE 27th Pl (Sherwood Gardens)	Regi John
16	160th Ave NE (south end)	Karen Campbell
17	159th Ave NE	Gary Dubois
18	Belmore	Ying Ping

SFCC WEBSITE

[HTTP://SHERWOODFORESTBELLEVUE.ORG](http://sherwoodforestbellevue.org)



[ABOUT](#) / [COMMUNITY](#) / [EMERGENCY PREPAREDNESS](#) / [BLOCK WATCH](#) / [AUGUST GARDEN CLUB](#) / [DUES](#) / [CONTACT](#)

SFCC September Board Meeting – Thu Sep 21 @ 7:00 PM

SEPTEMBER 18, 2023 / SFCCBELLEVUE / LEAVE A COMMENT

Hello Sherwood Forest,

The SFCC Board and Trustees invite you to the monthly board meeting this **Thursday September 21st at 7:00 pm.**

The agenda for this month is:

Nextdoor site

GET NEIGHBORHOOD UPDATES IN YOUR EMAIL!

Enter your email address to subscribe to this blog and receive updates about the neighborhood in your email.

Email Address

SFCC ACHIEVEMENTS LAST YEAR

- Continued to increase community engagement thanks to the Community Connections committee:
- 3rd Annual Block Party.
- Garden club.
- Decorating the Sherwood Forest signs.
- Had maintenance and repair work done on the Sherwood Forest Entrance signs.
- SFCC worked with Trees4Livability to help preserve our landmark trees.
- The emergency preparedness committee continued to educate our residents on the importance of being ready when an emergency strikes.
- Shared feedback and recommendations with the Cities of Bellevue & Redmond on upcoming developments and projects.

TREASURER'S REPORT

John Haro

Sherwood Forest Community Club

TREASURER'S ANNUAL REPORT

10/1/2022 - 9/30/2023

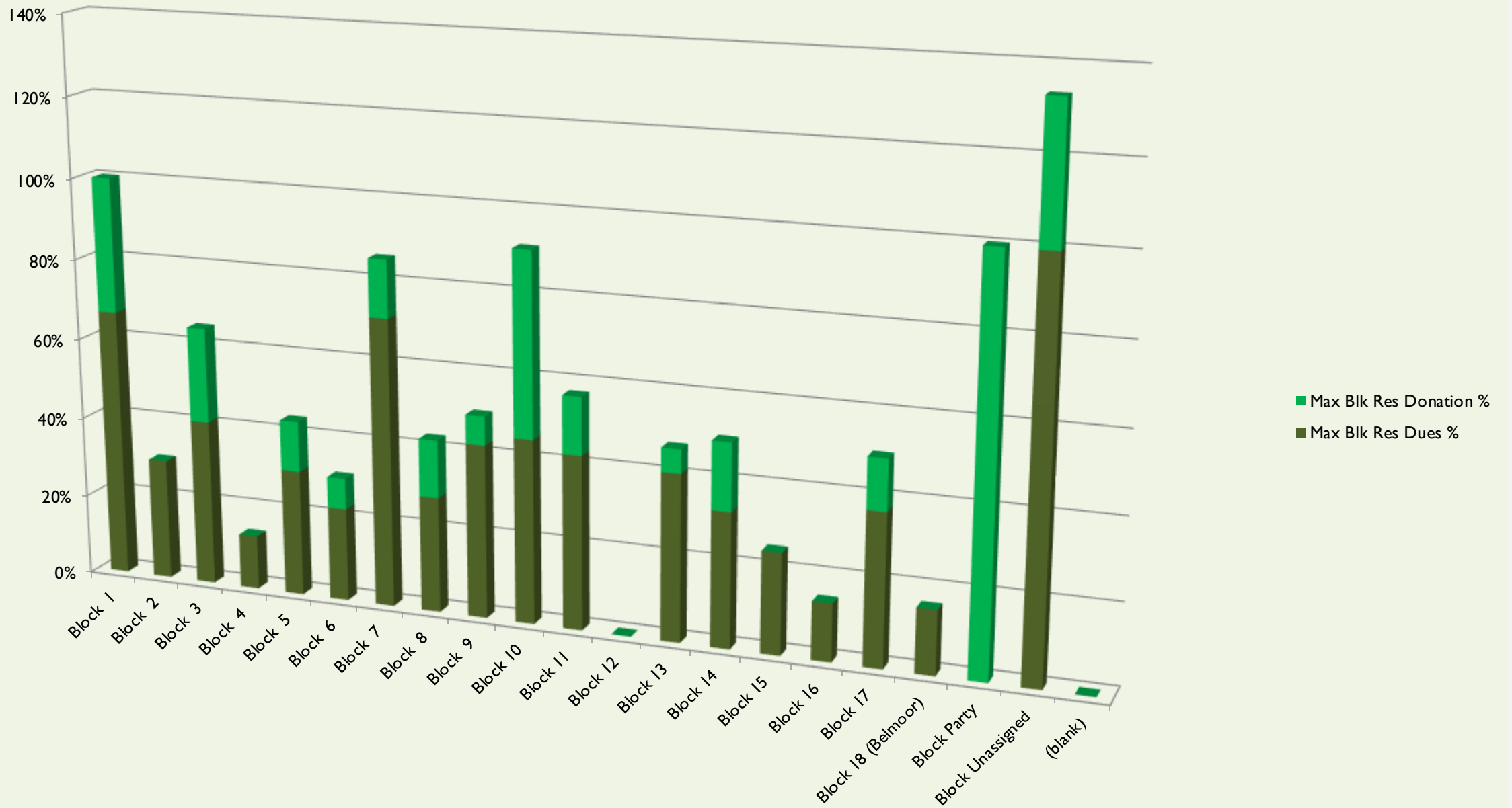
Balances of accounts at BECU

Checking Account Balance	\$	470.73
Savings Account Balance	\$	<u>3,842.28</u>
TOTAL	\$	<u>4,313.01</u>

Transactions for the Year at BECU

Date	Description	Checking	Savings	Balance	Change YoY
10/1/2022	Starting Balance	\$ 442.67	\$ 3,823.79	\$ 4,266.46	
various	Interest		\$ 18.49		
10/15/2022	PayPal Setup Transfer Fee	(\$0.05)	\$ -		
1/12/2023	John Haro (Reimbursement for 2023 SFCC WA Secretary of State fee)	(\$10.00)	\$ -		
1/18/2023	Anne Drebin (Reimbursement for Interlake HS Library rental)	(\$40.00)	\$ -		
1/27/2023	John Haro (WA Sec of State - 2nd payment for 2023)	(\$10.00)	\$ -		
2/27/2023	United States Postal Service (PO Box yearly renewal)	(\$194.00)	\$ -		
8/15/2023	Evergreen Wood Restoration (SFCC Sign Maintenance)	(\$1,101.00)	\$ -		
9/29/2023	Emmanual Solis (Reimburement for Block Party cups and ice.)	(\$61.40)	\$ -		
9/29/2023	Anne Drebin (Reimbursement for Block Party 2023 items)	(\$287.48)	\$ -		
various	Venmo deposit	\$228.95	\$ -		
various	Paypal deposit	\$399.04	\$ -		
various	deposit	\$1,104.00	\$ -		
9/30/2023	Ending Balance	\$ 470.73	\$ 3,842.28	\$ 4,313.01	
	Total Expenses	\$ (1,703.93)			
	Total Income	\$ 1,731.99			
Prepared by Treasurer John Haro on 10/17/2023					

End of Year Dues/Donations Totals		Paypal #	Paypal \$	Venmo #	Venmo \$
dues (94)	\$934.07	16	\$156.97	15	\$147.10
donation (6)	\$119.04	1	\$40.00	2	\$19.04
donation(revive signs) (24)	\$522.32	2	\$135.22	3	\$53.10
donation(block party) (6)	\$146.56	2	\$76.56	-	-



TRUSTEES STATEMENT ON FINANCIAL RECORDS

We have examined the treasurer's accounts every monthly meeting as well as the annual report and found them to be complete and correct. Therefore, we sign on the treasurer's annual report.

- Janet Castaneda, Emmanuel Solis and Patrick Tousignant.

SFCC Trustees

ANNUAL DUES – PAYMENT OPTIONS

Annual dues will remain at **\$10** per household

Ways to pay your dues:

- ***new*** Through website
(<https://sherwoodforestbellevue.org/dues-and-payments/>) **Paypal, Venmo and more**
- Send a **check/cash** to the address below.
- Setup **automatic bill payment** through your checking account
 - Your bank will send a check for you once a year. Set it and forget it!
 - No additional cost for you
- Send to:
*Sherwood Forest Community Club
P.O Box 7344, Bellevue, WA 98008
Tel (425) 985 6618*

Please include your name and SFCC address to keep our active membership records current.

[HTTPS://BELLEVUEWA.GOV/CITY-GOVERNMENT/DEPARTMENTS/POLICE](https://bellevuewa.gov/city-government/departments/police)

[HTTPS://BELLEVUEWA.GOV/CITY-NEWS/SECTOR-WATCH-NEWSLETTER](https://bellevuewa.gov/city-news/sector-watch-newsletter)

City of Bellevue, WA | Police

Search **Go!** Language **Menu**

Home » City Government » Departments » Police

Police

Report Crime Online Transparency and Accountability FAQs Join BPD

Departments

- Police
 - About Police
 - Community Crisis Assistance Team
 - Report a Crime
 - Police Services
 - Police Initiatives
 - Bellevue Police Youth Camp
 - Crime Prevention
 - Police News and Events

The Bellevue Police Department is here to serve you! Feel free to reach out to us and let us know how we can be of assistance.

A Message from Chief Wendell J. Shirley

Welcome to the Bellevue Police Department, a nationally accredited law enforcement agency committed to providing the highest quality law enforcement, community education and support services possible. Our residents enjoy a low crime rate and an outstanding

Contact
450 110th Ave NE
Bellevue, WA 98004

Telephone
[425-452-6917](tel:425-452-6917)

Emergency Phone Number

MyBellevue Chatbot

INCIDENT DASHBOARD – CRIME STATS SHERWOOD FOREST

Incident Dashboard

Select a date
Last 7 days

Bellevue Incident Data

Dashboard related to calls for service in the City of Bellevue. Incidents may or may not become a case and reflects overall police activity that is generated by 911 from the public as well as proactive policing activity.

District 6

Unknown

Reset | Select all

Select a sub-district

4-1

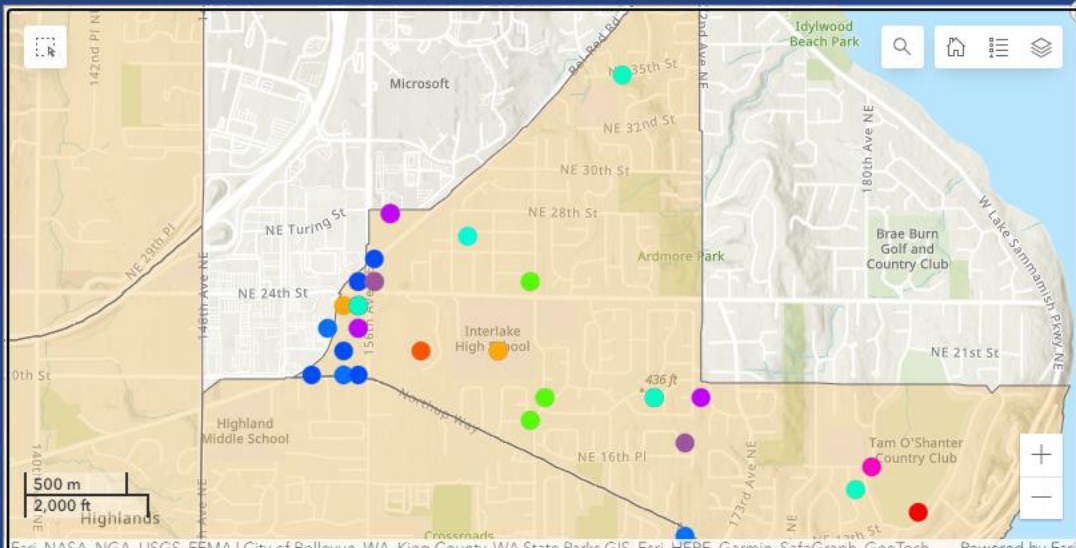
Search...

3-1

3-2

4-1

4-2

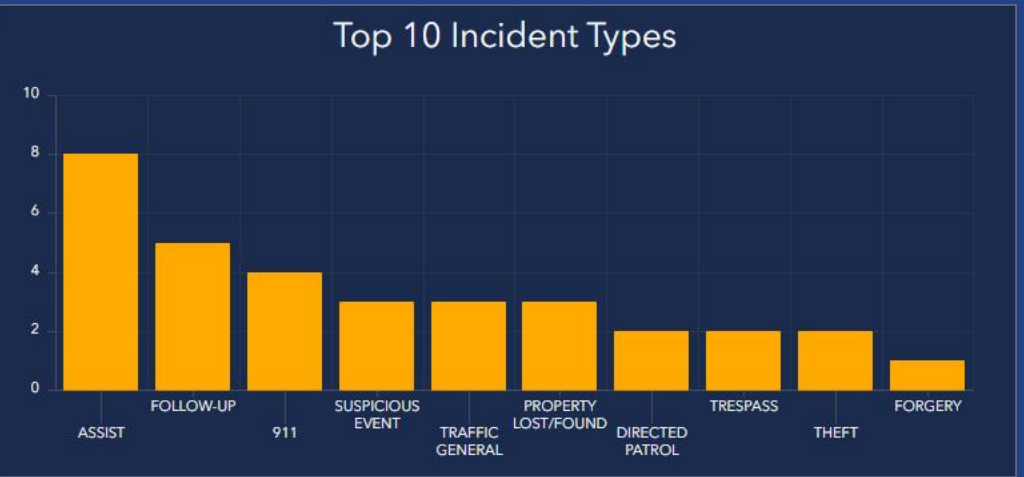


This map displays data for the last seven days and will update as various dates, locations, and crime types are selected. Use the date selector at the top to expand the data available on the map.

Average Priority 1 Response Time in Minutes

4.25

A priority 1 call is one where a major crime or event is in progress, or there is an immediate threat to life or property and an immediate response is required. Time displayed in minutes and fraction of a minute. Example: 3 mins and 30 secs will be displayed as 3.50.



LAND USE

STALLED PROJECTS

- Overlake Village South – Everything around the Safeway
- Pixel Apartments – The pawn shop / rug store
- Modera Bel-Red – Furniture store north of the Dollar Tree
(not to be confused with Modera Overlake, which is south of the Dollar Tree)
- Overlake East – Macy's furniture store
- Bel-Red Medical – The medical buildings on 24th
- Seritage – The old Sears
- Silver Cloud Homeless Shelter

WEST OPERATING AREA RESERVOIR

- As of late September, the City has not chosen a location and has indicated they may not move forward with this project.
- Hope to learn more in 4Q23.
- <https://bellevuewa.gov/city-government/departments/utilities/utilities-projects-plans-standards/capital-projects/west>

MICROSOFT CAMPUS REFRESH

- Microsoft Campus Refresh
 - Lots of progress there.
 - It will continue for a few more years (until at least 2025)
- Redmond Technology Station
 - The parking garage is now open!



TREE REMOVAL IN SF



- Our neighborhood continues to lose landmark trees.
- Trees 4 Livability & SFCC continue to lobby CoB for an updated tree ordinance. Sign the petition at <https://trees4livability.org/>
- The City is actively working on a revised ordinance. It is still 9-12 months out.
- **On December 4**, the City Council will review and take action on a proposed ordinance to extend interim Landmark Tree permit requirements past the end of the year. At this meeting staff will also provide an update on the full Tree Canopy Code Amendments project.
- If you see a landmark tree being removed, contact Code Compliance at the CoB. (425) 452-2047 / Codecompliance@bellevuewa.gov.

COMMUNITY CONNECTIONS

- The Community Connections initiative is aimed at getting to know our neighbors and bringing people together for fun, informative and inclusive events.
- The garden club continued this year with neighborhood garden visits, field trips and sharing of ideas and knowledge.
- We organized the 3rd annual block party in late August.
- Decorated the SF entrance signs.
- We want to hear from you with your ideas, or willingness to help plan and coordinate the events.
- If interested in joining this group or have ideas for events, email us at: sfccbellevue@hotmail.com.

COMMUNITY CONNECTIONS



EMERGENCY PREPAREDNESS

EMERGENCY PREPAREDNESS



THE Focus is to get more Sherwood Forest people involved.

Without a network of people taking small pieces of the work, we can not give adequate effort, connection, response or needed equipment.

With people, we can do some incredible things when needed.

- Like get more Community Emergency Response Team (CERT) trainee classes
- Like grow the network of neighbors with emergency tools, supplies, and/or skills
- Like for SFCC to purchase Designated First Aid Kits for designated households around the neighborhood?
- We have learned from the web, each other and doing certain activities like walking the neighborhood, looking at each other's implementation of Grab and Go, etc.

“Engaging Bellevue”

now is

“Bellevue 2044 comprehensive plan”

(What we want for the next twenty years
finalized next year)

Bellevue 2044

<https://www.engagingbellevue.com/hub-page/bellevue-2044>

Great Neighborhoods ended with the ideas that were the seeds of the Bellevue 2044-Comprehensive Plan.

More analysis with input from city residents to work on to build a final plan for the city's future.

The first step in the EIS process is called **scoping**. Scoping is the first step in the EIS process. Scoping helps focus the EIS by identifying specific elements of the environment like carbon emissions, wildlife habitat, water quality, etc. that might be affected by the proposed land use alternatives. As part of the process members of the public can raise any concerns about potential environmental impacts of each proposal. If it's determined that those concerns raised are significant, then they are further analyzed in the EIS.

**It needs US and our input to the City Council and Planning Commission.
For it to be OUR future**



IN MEMORIAM REMEMBERING KEN SCHIRING

Earlier this year, we lost Ken Schiring, a long-standing member of the Sherwood Forest Community. A former Sherwood Forest Community Club board member and member of the City of Bellevue's Planning Commission, Ken was instrumental in making the neighborhood what it is today. Here are a few of his efforts and accomplishments:

- Transitioning from septic tanks to a sewer system.
- Transition from 300-gallon oil tanks to natural gas heating.
- New street lights with LED lighting.
- Putting in perimeter sidewalks.
- Helped prevent what is now the Microsoft Campus from becoming a huge shopping center like Southcenter.
- He also helped turn what is now the Bellevue Technology Center into a Planned Unit Development, with its limited number of buildings in a park-like setting, instead of a 50-acre apartment complex.

His memory lives on with the legacy he's left this neighborhood and we will forever be grateful for his contributions.

SFCC BOARD ELECTIONS

OPEN POSITIONS

“Per the SFCC bylaws, a person cannot hold a position for longer than 4 years. All the current board members are at the 4-year mark, or have chosen to step down.”

SFCC Board:

President: _____

Vice President: _____

Treasurer: _____

Secretary: _____

Trustee: _____ (must be a prior Board member)

Potential Committees:

- Community Connection
- Block Watch
- Communication
- Emergency Preparedness
- Land Use
- Neighborhood Enhancement
- Traffic & Transportation

SFCC COMMITTEES

Communication Committee

- Develop and maintain an electronic communication system. Help with publication of Quarterly SFCC newsletters and any other community material.
- Block Representatives will distribute printed material such as SFCC newsletters etc to residents.

Emergency Preparedness Committee

- Develop and implement a block-by-block preparedness program to address impacts from severe storms, earthquakes, and other disasters.
- Involve Block Representatives to educate residents on the program.

Land Use Committee

- Monitor Bellevue and Redmond land use development proposals affecting the Sherwood Forest neighborhood. Have contact with City of Bellevue officials on Land Use. Be involved with City of Bellevue Land Use events, send summary of event back to SFCC Board.

Neighborhood Enhancement Committee

- Monitor the Bellevue Neighborhood Enhancement program, including announcements and proposals for northeast Bellevue from City of Bellevue. Solicit feedback from residents, via Block Representatives, and other means such as social media, email etc., on enhancements to the neighborhood.

Traffic & Transportation Committee

- Monitor and report to the SFCC Board of Directors regarding traffic flow patterns and speeds throughout the SFCC neighborhood. Monitor Bellevue and Redmond transportation plans, proposals, and projects with the potential to impact the Sherwood Forest Neighborhood

Community Connection Committee

- Connecting the many neighbors with fun, engaging, relevant events that will promote community building and opportunities to work together.

Block Watch Committee

- Develop and implement, block-by-block, the City of Bellevue Block Watch program to promote residential awareness, safety, and security.
- Involve Block Representatives and other residents in this effort of community safety.

DISCUSSION - COMMENTS

Q&A

What is working?
What is not going great?

Where should we go next?

How can I get involved?

Thank You!